

## EPIC® H-D 25 machined

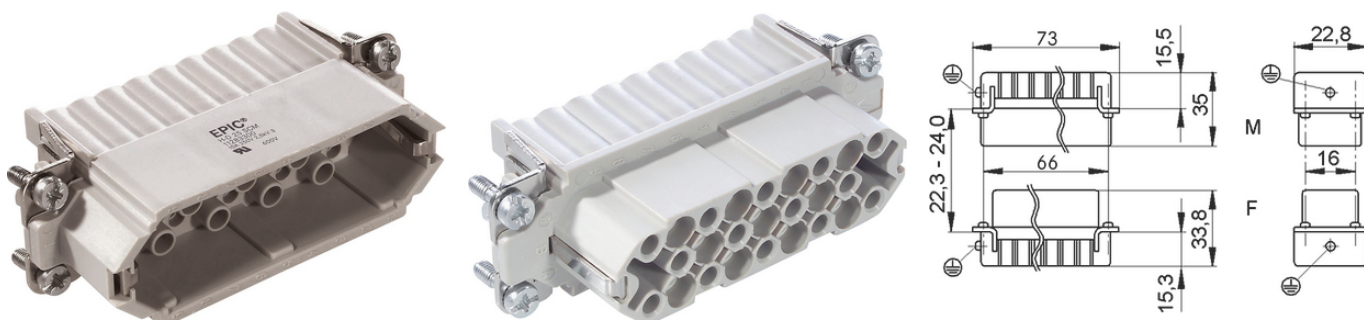
Multi-pole inserts for machined crimp contacts

The connector insert is ideal for applications requiring a high number of contacts. These can be found, for example, in machine or device manufacturing.

### Info

For machined contacts for fast processing with the crimping tool

Made in Germany



Mechanical and plant engineering



Space requirement



Robust

### Benefits

Inserts of the connector series H-D are designed for applications in which a high number of contacts are required.

### Application range

Machine and equipment manufacturing

Control engineering

### Technical Data

Classification ETIM 5:

ETIM 5.0 Class-ID: EC000438

ETIM 5.0 Class-Description: Contact insert for industrial connectors

Classification ETIM 6:

ETIM 6.0 Class-ID: EC000438

ETIM 6.0 Class-Description: Contact insert for industrial connectors

Last Update (24.04.2024)

©2024 Lapp Group - Technical changes reserved

Product Management [www.lappkabel.de](http://www.lappkabel.de)

You can find the current technical data in the corresponding data sheet.

PN 0456 / 02\_03.16

## EPIC® H-D 25 machined

Rated voltage (V):	IEC: 250 V UL: 250 V
Rated impulse voltage:	2.5 kV
Rated current (A):	IEC: 10 A UL: 10 A
Pollution degree:	3
Contact resistance:	< 2 mOhm
Contacts:	Copper alloy, hard silver/gold-plated
Number of contacts:	25 + PE
Termination methods:	Crimp termination: 0.14 - 2.5 mm <sup>2</sup>
Cycle of mechanical operation:	100
Certifications:	Certified production control: VDE-REG. no.: B437 UL-tested: UL File Number: E75770
Temperature range:	-40°C to +100°C, short-term up to +125°C

### Note

Photographs and graphics are not to scale and do not represent detailed images of the respective products.  
Prices are net prices without VAT and surcharges. Sale to business customers only.

**EPIC® H-D 25 machined**

Article number	Article description	Contact type	Article designation	Number of operating contacts	Pieces / PU
11283300	H-D 25 SCM	male	machined	1 - 25	5
11282300	H-D 25 BCM	female	machined	1 - 25	5