

EPIC® H-D 15 stamped

Multi-pole inserts for stamped crimp contacts

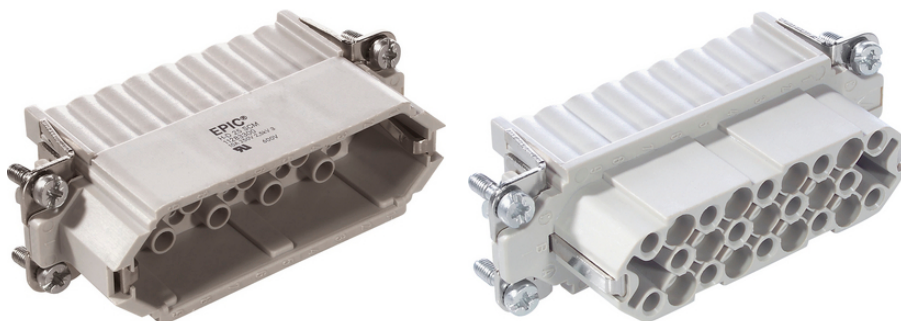
The H-D insert for pressed and machined crimped contacts is the ideal and reliable option for use in control systems.

Info

for automated production with crimping machine

Suitable for processing with contacts on reel

Made in Europe



Space requirement



Robust

Benefits

Inserts of the connector series H-D are designed for applications in which a high number of contacts are required.

Application range

Machine and equipment manufacturing

Control engineering

Technical Data

Classification ETIM 5:

ETIM 5.0 Class-ID: EC000438

ETIM 5.0 Class-Description: Contact insert for industrial connectors

Classification ETIM 6:

ETIM 6.0 Class-ID: EC000438

ETIM 6.0 Class-Description: Contact insert for industrial connectors

Rated voltage (V):

IEC: 250 V

UL: 250 V

Rated impulse voltage:

2.5 kV

Last Update (24.04.2024)

©2024 Lapp Group - Technical changes reserved

Product Management www.lappkabel.de

You can find the current technical data in the corresponding data sheet.

PN 0456 / 02_03.16

EPIC® H-D 15 stamped

| | |
|--------------------------------|--|
| Rated current (A): | IEC: 10 A UL: 10 A |
| Pollution degree: | 3 |
| Contact resistance: | < 2 mOhm |
| Contacts: | Copper alloy, hard silver/gold-plated |
| Number of contacts: | 15 + PE |
| Termination methods: | Crimp termination: 0.14 - 2.5 mm ² |
| Cycle of mechanical operation: | 100 |
| Certifications: | Certified production control: VDE-REG. no.: B437 UL-tested: UL File Number: E75770 |
| Temperature range: | -40°C to +100°C, short-term up to +125°C |

Note

Photographs and graphics are not to scale and do not represent detailed images of the respective products.
Prices are net prices without VAT and surcharges. Sale to business customers only.

EPIC® H-D 15 stamped

| Article number | Article description | Contact type | Article designation | Number of operating contacts | Pieces / PU |
|----------------|---------------------|--------------|---------------------|------------------------------|-------------|
| 11255000 | H-D 15 SCG | male | stamped | 1 - 15 | 5 |
| 11256000 | H-D 15 BCG | female | stamped | 1 - 15 | 5 |