

## EPIC® H-B 16 TGH

Housing design H-B. The industry standard.

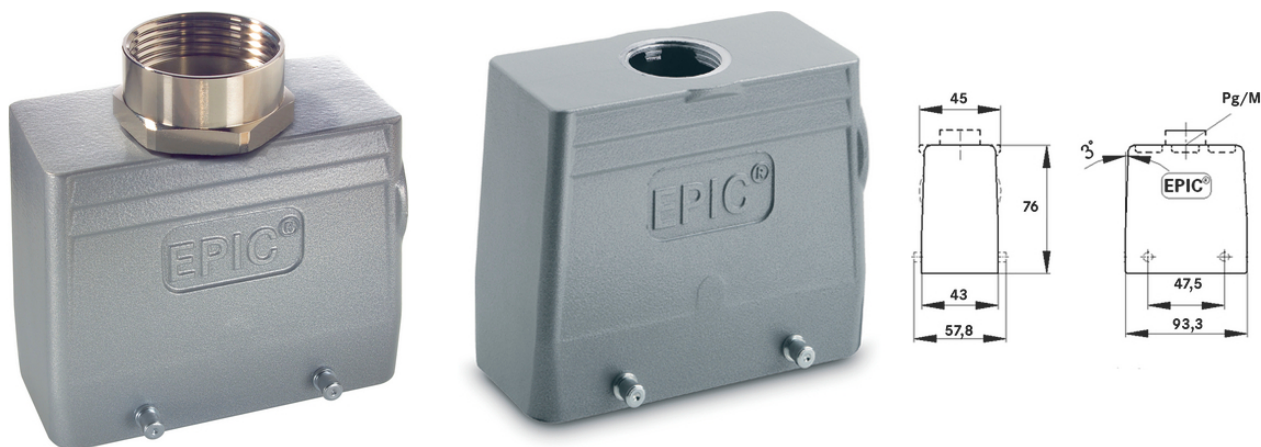
The robust metal housing with pivots for a direct lever and a direct cable entry is ideal for use in the plastics industry.

### Info

Non-slip ridges for comfortable disconnecting

More interior space for wiring

Protection rating UL50E tested



Supplementary automation components from Lapp



Mechanical and plant engineering



Mechanical resistance



Robust



Waterproof

### Benefits

The housing standard. Wide choice for all applications

M40 housing extension on M50 with SKINTOP 53112083 possible (clamping range 27 - 35 mm)

### Application range

Plant engineering

Light & sound technology

Plastics industry

Last Update (24.04.2024)

©2024 Lapp Group - Technical changes reserved

Product Management [www.lappkabel.de](http://www.lappkabel.de)

You can find the current technical data in the corresponding data sheet.

PN 0456 / 02\_03.16

## EPIC® H-B 16 TGH

### Product features

Hood, high version  
Bolts for double lever  
Straight cable entry  
Versions with / without neck

### Technical Data

Classification ETIM 5:	ETIM 5.0 Class-ID: EC000437 ETIM 5.0 Class-Description: Housing for industrial connectors
Classification ETIM 6:	ETIM 6.0 Class-ID: EC000437 ETIM 6.0 Class-Description: Housing for industrial connectors
Material:	Housing: powder-coated aluminium alloy, grey Lever: zinc-plated steel Sealing: NBR
Protection rating:	IP 65 (latched) NEMA 250, UL50E: 12, 4 (latched)
VDE-tested:	Certified production control: VDE-REG. no.: B437 UL-tested: UL File Number: E75770
Temperature range:	-40 °C to +100 °C, short-term up to +125 °C

### Note

Photographs and graphics are not to scale and do not represent detailed images of the respective products.  
Prices are net prices without VAT and surcharges. Sale to business customers only.

EPIC® H-B 16 TGH

Article number	Article description	M	PG	Neck	Pieces / PU
H-B housing: hood (straight cable entry, bolts for double lever, high version)					
70100200	H-B 16 TGH 21	-	21	yes	5
70100400	H-B 16 TGH 29	-	29	yes	5
79100200	H-B 16 TGH M25	25	-	-	5
79100400	H-B 16 TGH M32	32	-	-	5
79100800	H-B 16 TGH M40	40	-	-	5